



---

# Members Briefing – 23<sup>rd</sup> April 2015

## Child Sexual Exploitation – Post Rotherham

[www.sefton.gov.uk](http://www.sefton.gov.uk)

# Child Sexual Exploitation – Post Rotherham

## Agenda

- National context & government response
- Regional work
- Sefton
- Any questions



---

# Child Sexual Exploitation – Post Rotherham

---

## National context

August 2014 a review of CSE in Rotherham (Professor Alexis Jay)

Main findings:

- Organised CSE had been happening on a massive scale over many years.
- Local agencies had dismissed concerns or put in place an inadequate response

This was followed by a number of other reports and findings:



# Child Sexual Exploitation – Post Rotherham

## National context (2)

- September 2014 – HMIC: work of South Yorkshire Police on child protection
- October 2014 - Ann Coffey’s report “Real Voices” (following the 2012 Rochdale sexual grooming case)
- November 2014 – Ofsted: CSE thematic inspection “The sexual exploitation of children: it couldn’t happen here could it?”



---

# Child Sexual Exploitation – Post Rotherham

---

## National Context (3)

- January 2015 - Louise Casey: Rotherham's response to the Jay report; LGA and ADCS: jointly hosted a high level CSE summit
- March 2015 – Government: “Tackling Child Sexual Exploitation” ; Chief Social Worker for Children & Families, DfE: assessment and decision making tools.
- National Working Group (NWG): summary of recommendations;
- Barnado's and LGA guidance: effective responses to CSE



# Child Sexual Exploitation – Post Rotherham

## Government response

- Rt Hon. Eric Pickles response: Commissioners appointed at Rotherham MBC following Louise Casey's report
- CSE has been given the status of a national threat in the Strategic Policing Requirement



# Child Sexual Exploitation – Post Rotherham

## Regional and local work

- Pan Mersey CSE Strategy Implementation Plan: key priorities under Governance, Profile, Prevent, Protect and Prosecute (these same priorities are reflected in Sefton’s plans)
- Bi monthly meeting: Merseyside Police Assistant Chief Constable, DCSs, LSCB Managers and Family Crime Unit senior police officers
- Children at Risk of Harm (ChaRM) group
- Pan Merseyside “Gold” CSE Group



---

# Child Sexual Exploitation – Post Rotherham

---

## Sefton

- Children & Young People’s Continuous Improvement Board chaired by the Chief Executive: provides scrutiny of Children’s Social Care (CSC) and the Local Safeguarding Children’s Board (LSCB)
- A multi agency safeguarding hub (MASH) has been in place in Sefton since February 2014





---

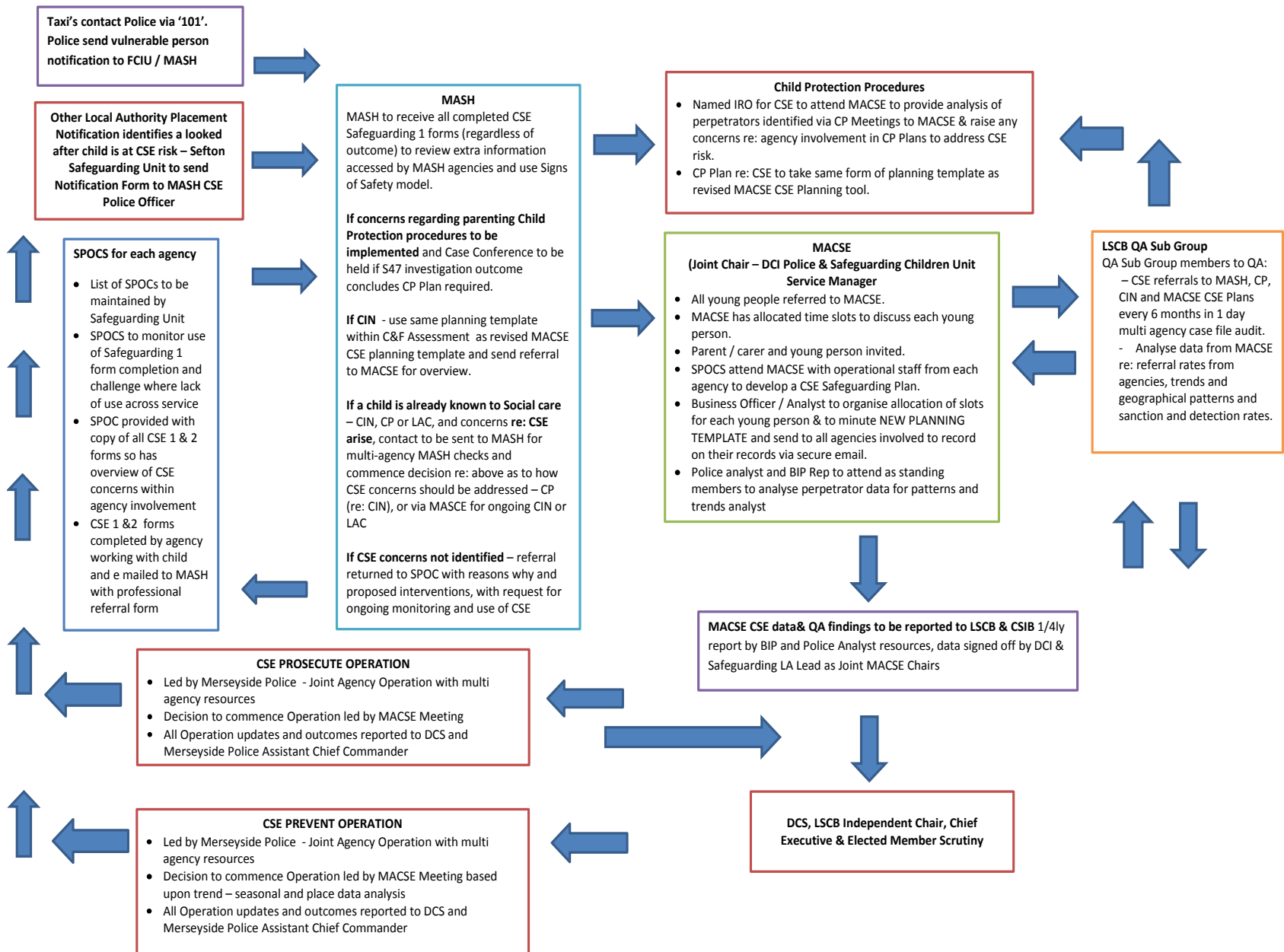
# Child Sexual Exploitation – Post Rotherham

---

## Sefton (2)

- LSCB CSE Strategy & Missing Children Sub Group – chaired by DCS
- CSE Pathway: revised and strengthened and communicated to the workforce by the LSCB
- Commitment of Single Point of Contact (SPoC) for CSE: all agencies
- MACSE Group – jointly chaired by Safeguarding Manager and Police and links made with MARAC





---

# Child Sexual Exploitation – Post Rotherham

---

## Sefton (3)

- CSE needs review commissioned by Public Health
- Training materials and briefings raise awareness of myths with regard to age and gender
- CSE screening tool: embedded within the Children's Social Care electronic data system and is being reviewed



---

# Child Sexual Exploitation – Post Rotherham

---

## Sefton (4)

- Taxi licensing: reviewed and the handbook updated
- The role taxi drivers play in tackling CSE awareness
- Children looked after from other local authorities (CICOLA), lessons learnt
- Children's Home Causing Concern Protocol is being developed



---

# Child Sexual Exploitation – Post Rotherham

---

## Sefton (5)

- Sefton LSCB dataset: gathers multi agency data
- Strategic Missing Children Monitoring Group established
- Council's strategic lead for Organised Crime: member of the LSCB CSE and Missing Children sub group
- Relevant data is shared with the MASH Manager and the CSE Business Officer/Analyst
- All reports of violence and sexual crimes are screened by an experience Detective Sergeant



---

# Child Sexual Exploitation – Post Rotherham

---

## Sefton (6)

- Making a Difference Group (children in care council): consulted with regarding CSE
- Information on CSE included with packs for children becoming looked after
- CSE awareness sessions: held across the LSCB partnership
- Referrals: increasing from a wider range of agencies



---

# Child Sexual Exploitation – Post Rotherham

---

Sefton (7)

## Schools:

- Twilight sessions
- Online course for parents
- Materials for Sefton Secondary Schools



---

# Child Sexual Exploitation – Post Rotherham

---

## Sefton (8)

Wider sessions include:

- Designated nurses (CCGs) have worked with health providers
- Police: all operational officers have completed an interactive IT CSE awareness course





---

# Child Sexual Exploitation – Post Rotherham

---

## Sefton (9)

Public awareness raising of CSE has included:

- DCS took part in a debate on Radio Merseyside
- 66 buses across Liverpool had adverts on their sides
- Signs of safety cards sent to all High Schools
- Two full pages of adverts in the Liverpool Echo



---

# Child Sexual Exploitation – Post Rotherham

---

Offenders must be tackled, regardless of their background, ethnicity, celebrity, their power or influence.

Victims must be believed, no matter how they behave.

Professionals and the public must become more aware of the signs of abuse, and feel empowered to come forward and report it – and have their reports taken seriously

<http://www.listentomystory.co.uk/videos/html>

Any questions?

